

# State of Wyoming Corner Record

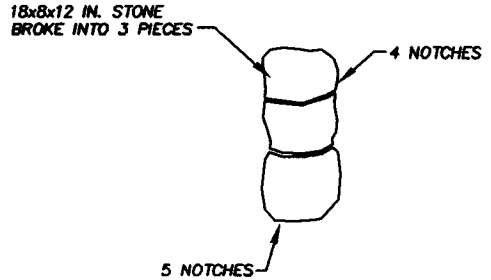
(In compliance with the CORNER PERPETUATION AND FILING ACT, Wyoming Statutes, 1997 Section 33-29-140 et. seq., and the Rules and Regulations of the Board of Professional Engineers and Professional Land Surveyors)

Reverse side of this form may be used if more space is needed.

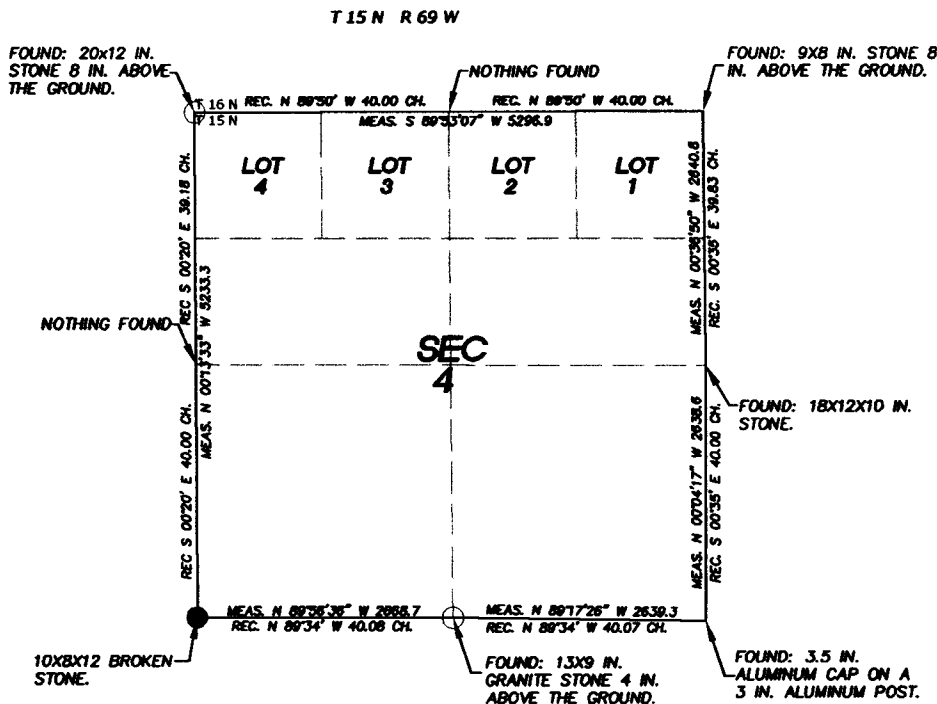
Record of original survey and citation of source of historical information (if corner is lost or obliterated). Description of corner monumentation evidence found and/or monument and accessories established to perpetuate the location of this corner. Sketch of relative location of monument, accessories, and reference points with course and distance to adjacent corner(s) (if determined in this survey). Method and rationale for re-establishment of lost or obliterated corner.

RECORD: Set a granite boulder 16x16x5 for cor. to secs. 4, 5, 8 & 9.

FOUND: 18X8X12 in. stone broke into 3 pieces. Monument has 4 notches on the East face and 5 notches on the South face.



## Monument location



## Monument Inscription

Legend:

- File corner/Found
- Controlling corner

Note: Datum based on Wyoming State Plane Coordinate System Wyoming East Zone NAD 83

Date of Field Work: 12/09/05

Office Reference: 25050

Prepared by: CED

## Cross Index Plat

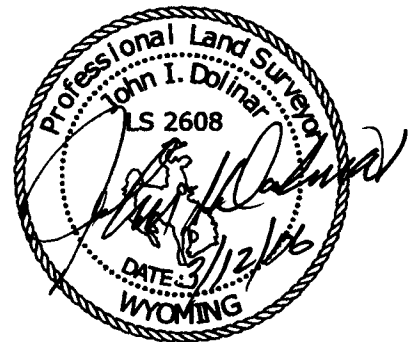
	1	2	3	4	5	6	7	8	9	10	11	12	13	14	15	16	17	18	19	20	21	22	23	24	25
A																									
B																									
C			6			5				4					3						2				1
D																									
E																									
F																									
G																									
H																									
I																									
J																									
K																									
L																									
M																									
N																									
O																									
P																									
Q																									
R																									
S																									
T																									
U																									
V																									
W																									
X																									
Y																									
Z																									
	1	2	3	4	5	6	7	8	9	10	11	12	13	14	15	16	17	18	19	20	21	22	23	24	25

Firm/Agency, Address

WILLIAM H. SMITH & ASSOC.  
P.O. BOX 820  
GREEN RIVER, WY 82935  
Phone Number: (307) 875-3638

This corner record was prepared by me or under my direction and supervision.

For Official Use Only



SEAL & SIGNATURE

Corner Name SW Corner Section 4, T 15 N, R 69 W, 6th P.M.

County: Laramie Wyoming

Cross-Index No.: E-9

SRPEPLS/PLSW: March 1994; PLSW January 1998

RECORDED 3/17/2006 AT 10:32 AM REC# 442194 BK# 1937 PG# 1359  
DEBRA K. LATHROP, CLERK OF LARAMIE COUNTY, WY PAGE 1 OF 1